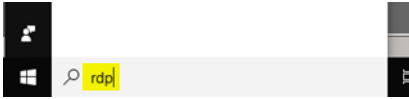


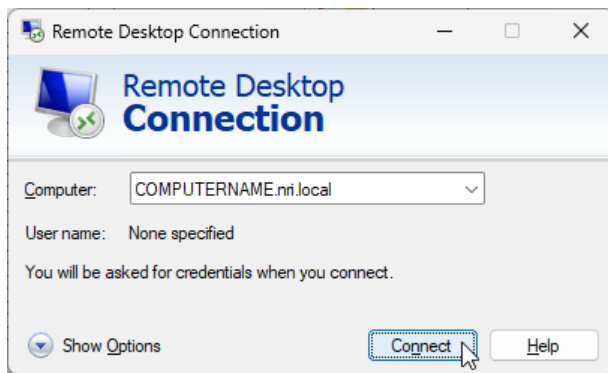
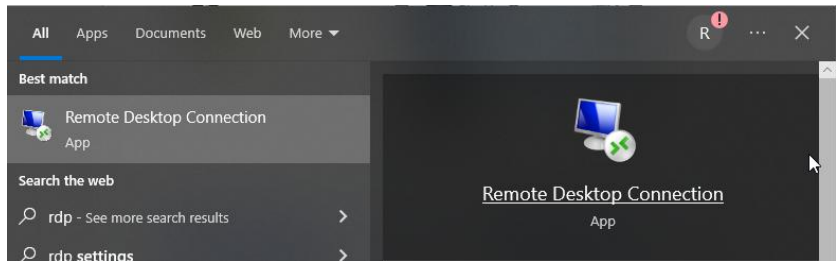
How to create a link and connect to **Nutrex** remotely

If you want to use your computer at work remotely, it has to be turned on, Monitors can be switched off.

On your private computer click into Windows search and type in **rdp**



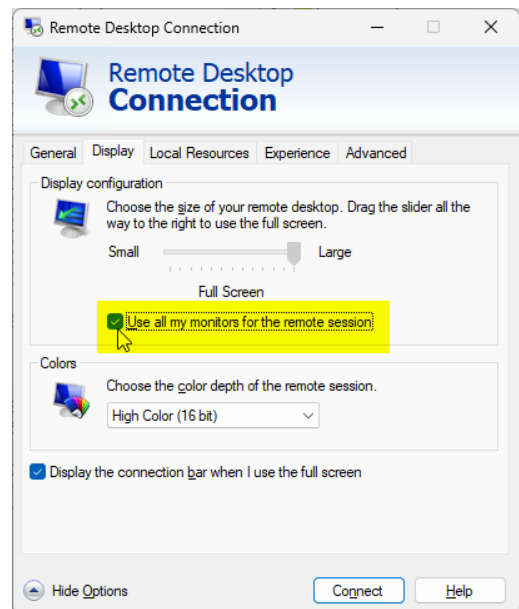
Click on **Remote Desktop Connection**



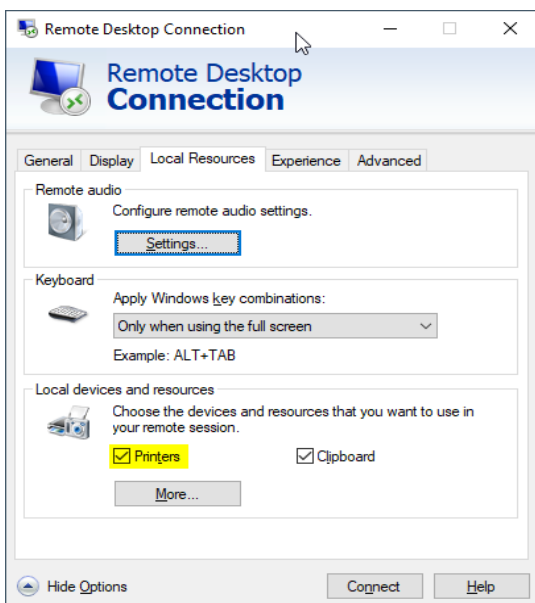
Click on **Show Options**

Computer:
<COMPUTERNAME>.nri.local
for example: SUPERMAN.nri.local

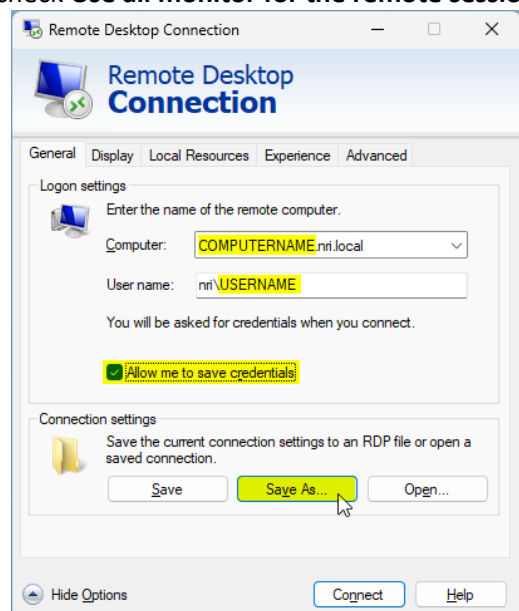
User Name:
nri\<USERNAME> for example: nri\Ralf



If you have more than one monitor at home,
check **Use all monitor for the remote session**

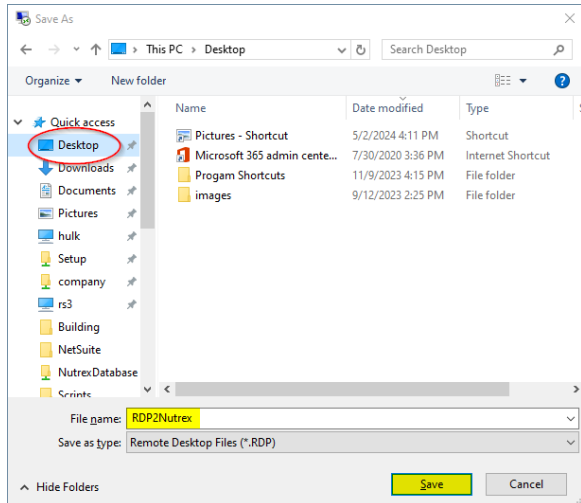


If you want to print on you private printer,
check **Printers**



When you are done,
click on **"Save As ..."**

How to create a link and connect to **Nutrex** remotely

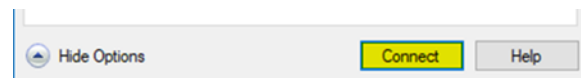


Select your Desktop and name it like RDP2Nutrex

Important!

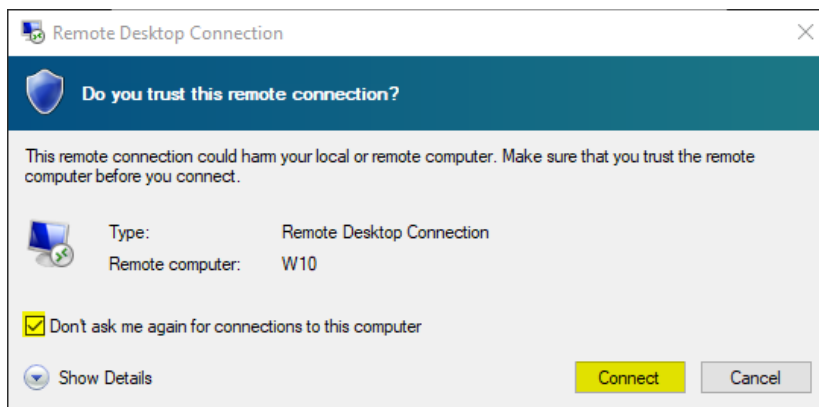
Before you can Connect with RDP to your computer, you have to connect your computer via VPN to Nutrex using the FortiClient VPN Software.

Are you are connected?



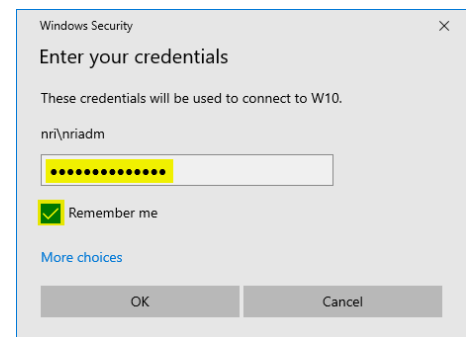
Ready? Click "Connect":

Dialog on first time connection:



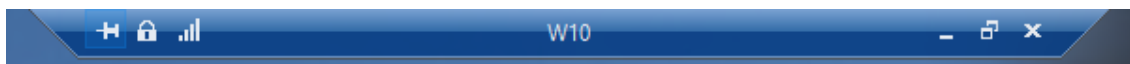
Select "Don't ask me again ..."

Type in your password



Click on "OK" and you will get connected to your "Remote Desktop"

You will see that you are "remote connected", when you see this:



centered on the top of your screen.

W10 -> your computer name